

BREAST CANCER FACT SHEET

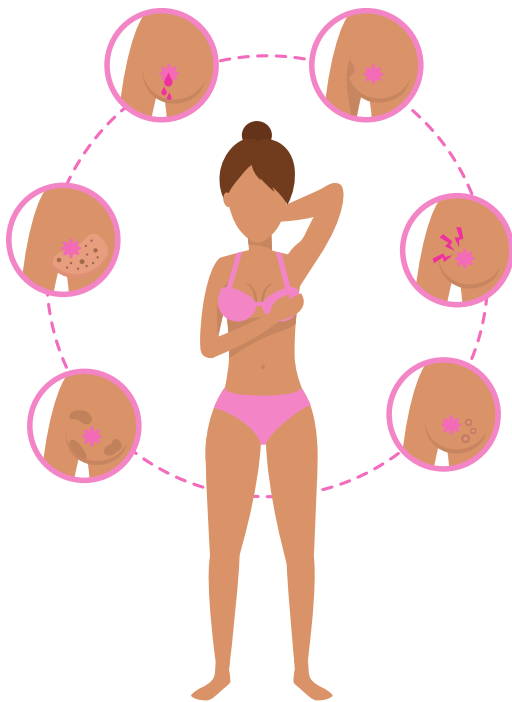
BREAST CANCER

Breast cancer is a disease in which cells in the breast grow out of control. It can spread to other parts of the body.

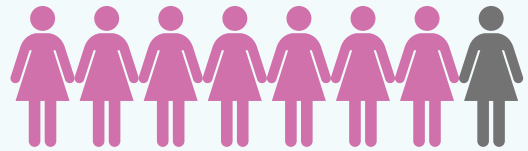
Breast cancer is almost 100% survivable when found early on a mammogram.

SYMPTOMS

- New lump in the breast or armpit
- Nipple discharge other than milk
- Pain around any part of the breast
- Swelling of part of the breast
- Irritation or dimpling of skin
- Redness or flaky skin



STATISTICS



1 in 8 women are diagnosed with breast cancer



1 in 38 women will die from breast cancer

PREVENTION



Mammograms are important in detecting and preventing cancer. Women over 40 should have a mammogram once per year.

CONTACT INFO.

If interested in a free mammogram, call us at **312.942.3368** or visit us at **www.equalhope.org**.

equal hope

CERVICAL CANCER FACT SHEET

CERVICAL CANCER

Cervical cancer forms in the tissue of the cervix.

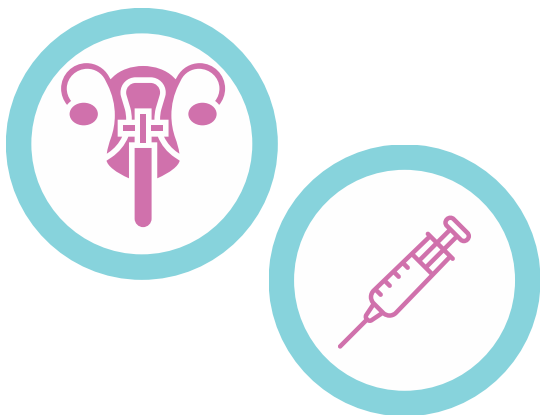
STATISTICS



ALMOST
100%
PREVENTABLE

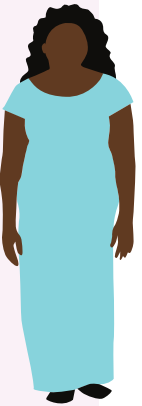
PREVENTION

- Get the human papillomavirus (HPV) vaccine
- Regular pap smears



SYMPTOMS

- Blood between periods or after menopause
- Persistent pelvic pain
- Pain during intercourse
- Blood in urine
- Problems urinating or having a bowel movement



RISK FACTORS



CONTACT INFO.

If interested in a free cervix screening, call us at **312.942.3368** or visit us at **www.equalhope.org**.